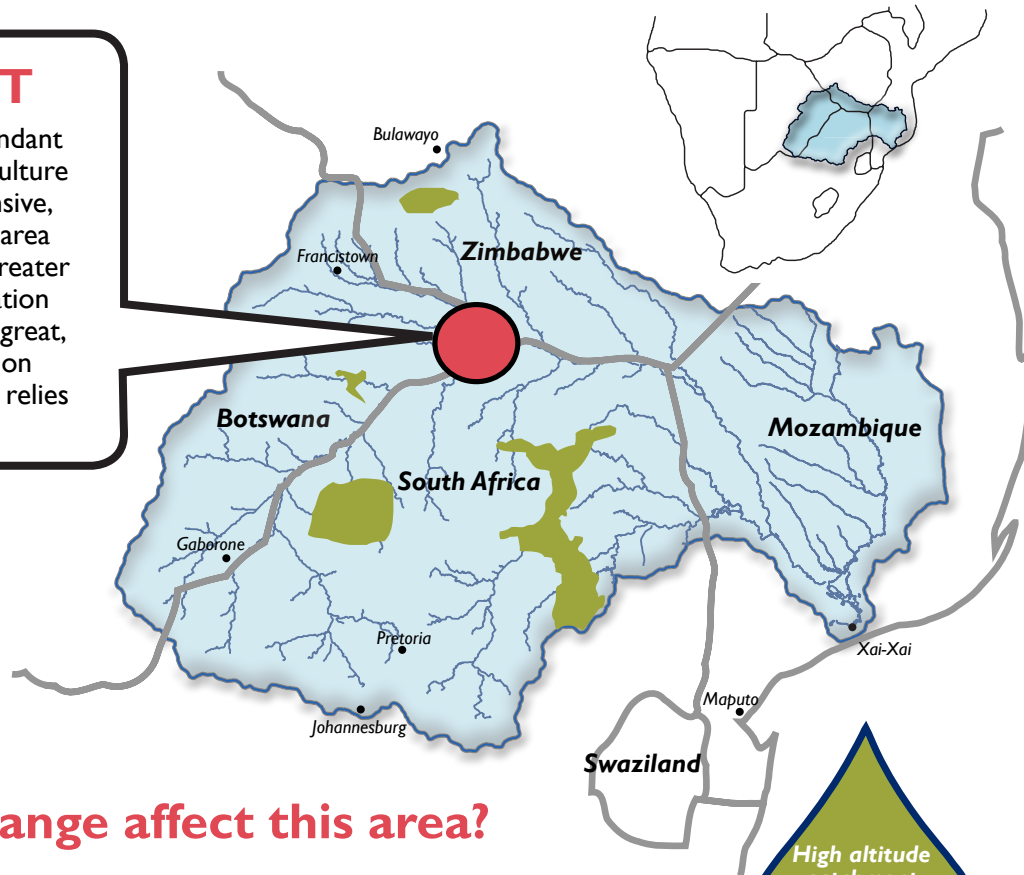


# RESILIENCE ACTION AREA 3: Shashe-Limpopo River Confluence (Botswana, Zimbabwe and South Africa)

## THE LIMPOPO RIVER BASIN: IDEAS FOR A RESILIENT FUTURE

### AREA SNAPSHOT

Arid zone of beautiful landscapes, abundant wildlife and rich history. Irrigated agriculture on both banks of the Limpopo. Extensive, low-density livestock grazing. As this area incorporates much of the proposed Greater Mapungubwe Transfrontier Conservation Area (TFCA), potential for tourism is great, but livelihoods increasingly depend on mining and agriculture. Local economy relies heavily on water.



### How will climate change affect this area?



#### CLIMATE CHANGE

- Decreased rainfall
- Increased temperature



#### ENVIRONMENTAL IMPACTS

- Decreased flow of ephemeral rivers
- Slower recharge of alluvial aquifers
- Decreased vegetation
- Decreased soil moisture



#### HUMAN & ECOSYSTEM IMPACTS

- Decreased livestock productivity
- Increased heat stress and loss of wildlife
- Increased animal disease threatens meat exports

WE HAVE THE POWER TO ADAPT

# OPPORTUNITIES FOR ACTION

Implement binding water agreements between Botswana, South Africa and Zimbabwe

Improve management of sub-basin water transfers, e.g. North-South Water Carrier in Botswana

Fully implement the Mapungubwe TFCA

Strengthen oversight of water use in mining, irrigation



Increase cultural and ecotourism

Reduce wildlife-human conflict



Improve response to wildlife-livestock transmissible diseases

Study impact of climate change on disease patterns



## LEARN MORE

THIS CASE STUDY features one of eight Resilience Action Areas described in Risk, Vulnerability & Resilience in the Limpopo River Basin (2015). Produced by One-World Sustainable Investments for the USAID Southern Africa Resilience in the Limpopo River Basin (RESILIM) program, the report is available at <https://www.usaid.gov/documents/1860/risk-vulnerability-and-resilience-limpopo-river-basin-synthesis-0>. RESILIM collaborates with government and nongovernmental institutions across the four basin countries to improve water management, promote biodiversity, and support climate change adaptation.

Photo attributions:  
 Photo by StormSignal / CC BY-SA 2.0  
 Photo by Derek Keats / CC BY 2.0  
 Photo by IFPRI  
 Photo by Marius Loots / CC BY-SA 3.0  
 Photo by RESILIM  
 Photo by Soaring Flamingo / CC BY-ND 2.0  
 Photo by USDA online photography center  
 Photo by Hamish John Appelby  
 Photo by CIA  
 Photo by Jason Richardson

RESILIM is made possible through the support of the American people through the United States Agency for International Development (USAID). The contents of this brief do not necessarily reflect the views of USAID or the United States Government.

 Follow RESILIM on Facebook.

**oneWORLD**  
We build resilient futures

 **USAID**  
FROM THE AMERICAN PEOPLE